



Housing Justice

The Housing Justice
Church and Community
Night Shelter Network

IMPACT REPORT 2017

Introduction



This is the fifth year that Housing Justice has collated data from projects in what has developed in to the Housing Justice Church and Community Night Shelter

(CCNS) network. This year's data tells the often untold stories of night shelter projects across the country, operating without any government funding but providing vital shelter for people experiencing homelessness.

This is a story of volunteers quietly spending cold winter evenings cooking a hot meal, making up camp beds, playing board games and having chats with people who are just like them, but who happen to be experiencing a period of homelessness. It is a story of the appalling situation where thousands of people don't have a place to call home in the 5th richest nation on earth. But at the heart of the story is the work that night shelters do, and the belief that home is not simply bricks and mortar, but community, relationship and belonging.

Across England and Wales more than four thousand (4284) volunteers gave up their time to give shelter and solidarity to almost three thousand (2923) people experiencing homelessness. This is the highest number of guests using shelters in the Housing Justice network that we have ever recorded. What's more, many of these people experiencing a period of homelessness won't be captured

in official data, and rough sleeping numbers nationally would almost certainly be higher without shelter projects.

While we at Housing Justice celebrate the excellent care and hospitality dispensed by these incredible projects, this report should serve as a stark reminder of the failures of housing and homelessness policy, and stiffen the resolve to address the root causes.

The exceptional work of these small projects across the country is humbling, and so too is the expedient growth of the network of projects over recent years. Two years ago, there were 65 shelters operating in the network - today, there are 107 projects in the Housing Justice Network. More night shelter projects, doing more to get alongside people whilst providing sustainable routes out of homelessness is encouraging. But it also necessitates more work from organisations like Housing Justice to give start up support, train volunteers, provide advice and lobby at a national level for the issues these projects encounter through their vital work. ■

You can find out more about the work of Housing Justice, the Church and Community Night Shelter Network and how to support it at housingjustice.org.uk.

Kathy Mohan, Chief Executive, Housing Justice, December 2017

"Thank you for the fantastic work that Housing Justice and the Church Winter Night Shelters do.

I have been impressed by the work you have been leading across the country to make church and community night shelters genuine places of change for those who do not have anywhere else to go."

Lord Bourne of Aberystwyth, Parliamentary Under Secretary of State, Department of Communities and Local Government and Minister for Faith. January 2017



The View From the Frontline

Emma Neil,
Church and Community
Night Shelter Co-Ordinator

The Quality Mark is an integral way in which Housing Justice provides peer led support to church and community shelter projects. Alongside the Quality Mark, we continue to support the set-up of new CCNS projects; over the last three years, we have supported the start-up of 15 new church and community night shelters.

We know that setting up a church and community night shelter is challenging. Trying to manage increases in demand and making decisions about who to take, the logistics of often negotiating different buildings and of moving beds and bedding, of managing and supporting volunteers, working with partners and councils and working with different churches and faith groups and community groups... supporting the guests is often the least challenging aspect! Nevertheless, we are pleased to have worked with eleven projects this year, in Bishops Stortford, Hastings, Ipswich, Manchester, Medway, Nottingham, Southall, Thanet, Torquay, Westminster and Leeds. We have been able to give evidence of the excellent standards of practice that are already seen, and where we have made recommendations, improvements have been made for volunteers and guests.

Looking back over the past year, we have been humbled to visit and accredit incredible projects demonstrating excellence in practice and making a real difference to the lives of their guests. Two brief extracts from our accreditation visits show the difference these projects make;

Guest feedback

"Feedback from guests showed a great respect for the service they were given. Three guests

named staff who went beyond the expectations required of their role. They felt they were treated fairly, with respect and care."

"Guests are given excellent opportunities to give back to the project, not only in clearing away dishes and food but many venues have run projects at the weekend; gardening or painting or clearing out a room in the venue. Guests are invited to help if they want too - most do, as a way of giving something back and building their own confidence and giving them dignity. Guests and volunteers were talking about playing football together and learning to cook British food".

Move on support

"Key strengths at this level are the admission/referral process and the case-working for guest support and move on. Much time and energy has been invested in developing the referral principles and pathway, and into developing effective working relationships with other agencies, whereby the shelter project has more leverage to achieve priority follow-up action for guests. Contacting the managers of all the referral agencies at the start of the season, making regular follow-up calls, and the project manager and case-worker's drive and tenacity in pushing for appointments and progress all contribute to this approach, which aims to achieve better outcomes for guests in the time available."

This is what excites us most when we look at the certificates that we are awarding projects – each piece of paper is not a tick box exercise, but represents hours of cooking meals, of dedication to training and supporting volunteers, of volunteer work setting up beds and cleaning toilets, attention to detail. Calls to partner agencies, chasing benefits, listening to guests, supporting them and seeing people move on into homes and work. These details are church and community night shelters at their best. Creating special places; places of hospitality, places where barriers of poverty, gender, education, nationality, ethnicity, faith, sexuality, ability and housing status are broken down to enable people to move on in their lives. ■

The View From the Frontline

Mark Brennan, **Church and Community Night Shelter Network Co-Ordinator**



“Only by collaborative working can homelessness be reduced”

Despite a vast and mature sector of professional and statutory homelessness services in the UK ¹, homelessness continues to rise at an alarming rate. Conspicuous rough sleeping alone, just the tip of the iceberg, has doubled in England since 2010. This comes as no surprise when you begin to consider the growing scale and scope of hidden homelessness, a much bigger chunk of the iceberg, existing below the waterline and which is fuelling conspicuous rough sleeping. The Homelessness Monitor ² now estimates that more than 3 million people in the UK are hidden homeless, and a recent NAO report has evidenced that welfare reform is a primary driving factor. ³

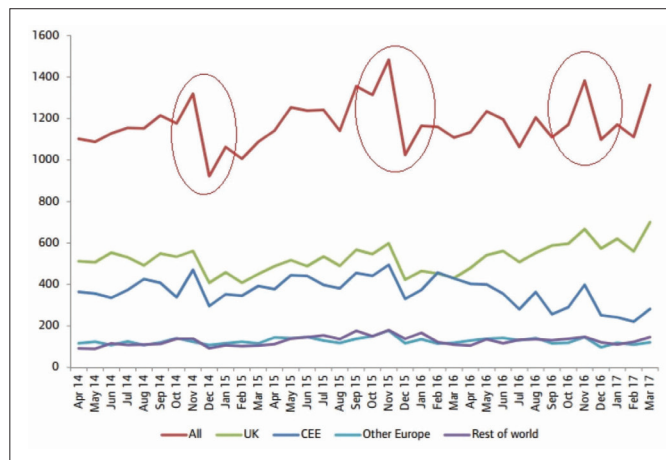
We now know that of people new to the street, picked up by outreach workers and brought into the No Second Night Out hubs in London, only a third had presented to their

local authority for assistance in the previous 12 months. ⁴ A recent London Assembly report on hidden homelessness suggests that the reasons for this are threefold: ⁵

- They knew little about advice services and how they work
- They didn't expect advice services to be able to help them
- They – or people they know – had negative experiences of such services in the past

The scale of homelessness means that no one group, sector, government department or campaign will provide a solution on its own. Real progress on reducing homelessness requires government, third sector, and volunteer groups (including faith communities) all working together.

A great example of this approach in practice is in Westminster, the rough sleeping capital of the UK, with the densest population of conspicuous rough sleepers by a huge margin. Here, despite having the most heavily resourced homelessness services to address the problem, ⁶ the local authority are acknowledging that they cannot manage alone. If they hope to make any significant progress reducing homelessness, it would have to be the whole community working together. This spawned the WHAT Network – Westminster Homeless Action Together – a diverse community network of groups, agencies and services led by a highly skilled and experienced cross-sector steering group of homelessness professionals. We support



This graph from the most recent annual CHAIN report illustrates the significant impact that the CCNS network of shelter projects makes in London alone.⁷

this initiative and call on other local authorities to replicate it across the country.

We have a mature homelessness sector that recognises and acknowledges that it isn't working for a significant and growing cohort of people who are homeless (complex needs, revolving door/returners, chronic, entrenched/living on the street, hidden). These people struggle to engage appropriately and effectively with existing conventional services for good reason – primarily because they are predominantly deficit-based in their approach.

This cohort represents the majority of guests we see in CCNS projects across the network.

Housing First, Co-Production, ABCD, PIE's, trauma-informed care and Strength-Based Practice are the sector's most recent responses to this. These new approaches are gaining momentum and CCNS projects are ideally suited to and indeed complement and support this work. There is a burgeoning development of grassroots projects and activities by the CCNS network (extending throughout the year, not just winter) that are including and

embracing our homeless brethren back into our communities. Their focus is on relational support for their guests each evening in their community shelters; then drawing together the necessary clinical support with professional services during the day as clients.

The CCNS network is an ideal vehicle for the wider community engagement that we need, so that we are all working together towards achieving the outcomes we all want to see – truly ending homelessness, not just managing it! ■

¹ See Homeless UK Directory of Services - <http://www.homeless.org.uk/search-homelessness-services>
Homeless Link SNAP Report - <http://www.homeless.org.uk/facts/our-research/annual-review-of-single-homelessness-support-in-england>
Atlas of Services for Homeless People in London - <http://lhf.org.uk/blog/atlas-launch/>

² Fitzpatrick, Suzanne, Pawson, Hal, Bramley, Glen., Wilcox, Steve., and Watts, Beth., The Homelessness Monitor: England 2017, Crisis, 2017.

³ National Audit Office, 'Homelessness Report', 2017. <https://www.nao.org.uk/wp-content/uploads/2017/09/Homelessness.pdf>

⁴ St Mungo's, No Second Night Out - The Long View, June 2016.

⁵ London Assembly Housing Committee: Hidden Homelessness in London, September 2017.

⁶ Department for Communities and Local Government, CHAIN Annual Report, 2017.

⁷ Ibid.

Report Narrative

National Figures

Throughout the network, the number of guests accessing shelter accommodation has risen dramatically from last year, from 1,920 to 2,923, making 2016/17 our highest recorded year for guest numbers. This guest number increase is attributable largely to rising need, as homelessness has continued to rise rapidly across the country. However, guest numbers also rise as a result of expansion across the network, offering more beds and supporting people in the community throughout this time of significant growth in need.

Across the country, 4,284 volunteers supported local shelters, contributing a total of 273,605 hours in the last year. The strength of shelters is growing, and this is seen in the increasing numbers of our guests who have case management, and are willing to report a complex need or case history. However, this in turn leads to increased need for wider range of services in order to support guests going forward.

Demographics

Of shelter users, 59% attending were UK nationals, with a further 23% non-UK EEA citizens and the remaining 18% non-European citizens. This represents an increase in the number of UK nationals using shelters, which was previously 47%.

In terms of the changes in proportions of guest nationalities, a plausible conclusion would be that increased targeting of EEA na-

tionals for detention and deportation, under the new classification of rough sleeping as an abuse of the right to freedom of movement, has led to their decreased presence and access of services. However, in London, the number of EEA nationals sleeping rough has only decreased by 2 percentage points, to 32%. Given that targeting of EEA migrants sleeping rough is predominant in London, it seems that this cannot account for the changes in nationalities seen.

Instead, it is likely that this stems from welfare reform, which disproportionately affects UK nationals, as well as the increased likelihood of referral for UK nationals due to higher engagement with services able to do so. Conversely, migration from Eastern and Central Europe is slightly decreasing, and due to increased enforcement action regarding homeless migrants, non UK-nationals are less likely to engage with referral agencies. Of guests attending shelters, one in ten had no recourse to public funds, making them ineligible to claim benefits or state homelessness support.

Complex Needs

Guests reporting drug use has risen by 7%, to 29% in the past year. Whilst alcohol consumption hasn't risen, both alcohol and drug use are alarmingly high, at 32% and 29% respectively. Another significant increase was shown in the proportion of guests reporting a mental health issue, which has rocketed from 24% in 2014-15 to 48% just two years later.

Year	2012-2013	2013-2014	2014-2015	2015-2016	2016-2017
Shelter Users	1,439	1,369	2,171	1,920	2,923
The number of guests accessing shelter accommodation has risen dramatically from last year, from 1,920 to 2,923, making 2016/17 our highest recorded year for guest numbers.					

In part, this stems from shelters increasing awareness of the needs of people experiencing homelessness, as practice sharing and experience increase throughout the network. Moreover, increasing professionalization throughout the network means that better relationships are being built with guests, which in turn leads to increasing honesty in reporting. This is, however, against a backdrop of significant spending restraint from different tiers of government, such as mental health and addiction support, which is also able to explain the concentration of substance users and those with mental health problems amongst shelter guests. Irrespective of cause, the high proportion shows a serious problem, which must raise concerns over both substance use and its increase. Investigations released by the BBC this autumn report an estimated 25% increase in drug use among the homeless population, showing this growth amongst shelter guests is in line with national homeless trends.

As with reporting of substance use, shelters increasing alertness to complex needs also partially explains the increase in guests presenting and reporting a criminal record, which has risen from 6% to 36% in the last year. Once again, though, this is pitted against a background of welfare cuts causing increased homelessness; ex-offenders are amongst the most vulnerable to homelessness nationally, and the freeze of housing benefit, introduction of Universal Credit and continued narrowing of tenants that landlords are willing to consider all disproportionately affect them. Lastly, close to one third of guests report a relationship breakdown as a factor in their

homelessness, reaching 31% (from 24% last year).

In terms of support, guests are accessing a mix of services. Overall, 88% of guests reported accessing internal or external case support, a slight increase from 83% last year. This means that more and more guests are accessing services to support them into housing. Notably, there was an increase in the amount of guests utilising internal case support within night shelters, which suggests that shelters throughout the network are increasingly professionalised in offering formal support to guests.

London Figures

London shelter users account for just under half of shelter users nationally, at 48% of total guests. The rate of occupancy in London shelters is just 1% higher than the rest of the country as a whole, suggesting that whilst demand differs, need is being met to the same extent both in and outside of London.

Of London's shelter users, the variation in nationality is markedly different to the rest of the country; 44% of guests in London shelters are British, with a further 32% from other EEA nations. The remaining 24% are third country nationals, compared to the UK average of 18%. Of shelter users in London, 9% had no recourse to public funds, similar to the national average.

In London, guests reported drug and alcohol use similar to the rest of the country. Likewise, the mental health problem reporting and relationship break down figures are almost identical in London compared to the national average. ■

2,923

Number of guests accessing shelter accommodation in 2016/17

4,284

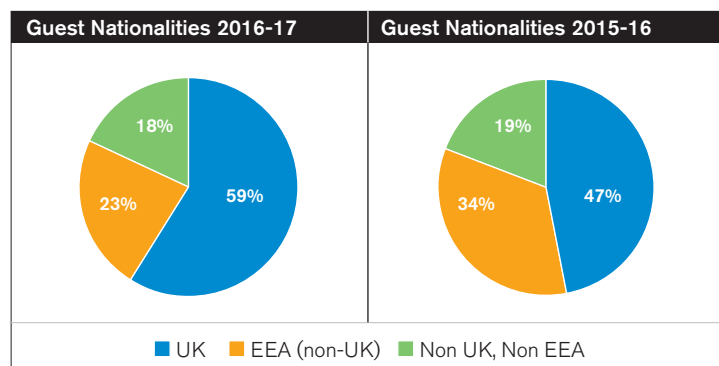
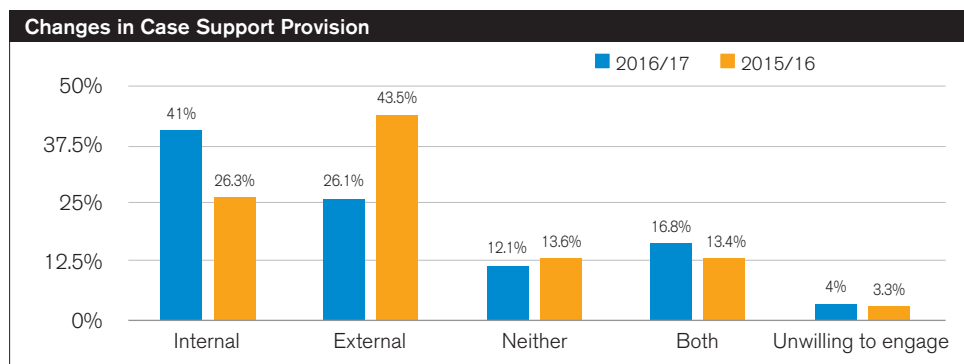
Volunteers supported local shelters in 2016/17

48%

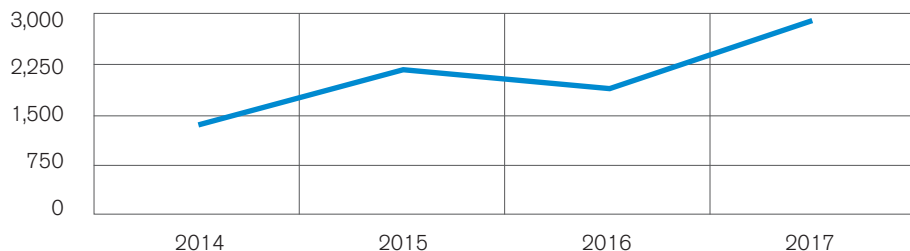
The proportion of guests reporting a mental health issue

Report Figures

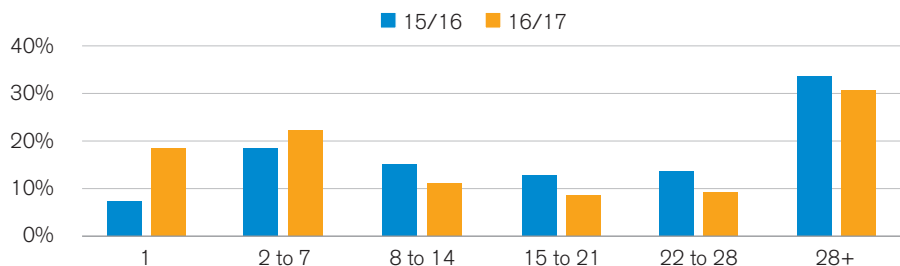
Question	Result	No. of shelters	Average per shelter	Result of all provided data
Total number of shift volunteers	62,491	43	1,453	77,023.79
Total number of other volunteers	4,248	19	224	11,849.68
Shift volunteer hours	273,605	41	6,673	353,684.00
Value of shift hours	£3,461,098		£84,417	£4,474,103
Number of nights open	5,018	49	102	5,427.63
Number of bed nights	74,755	46	1,625	86,130.76
(Number bed nights for those with beds filled data)	31,004	23		
Number of beds filled.	23,287	23	1,012	53,661.35
Occupancy rate	75%			



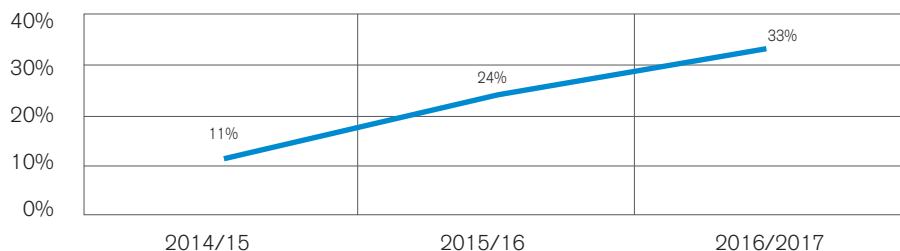
Total guest number (per year)



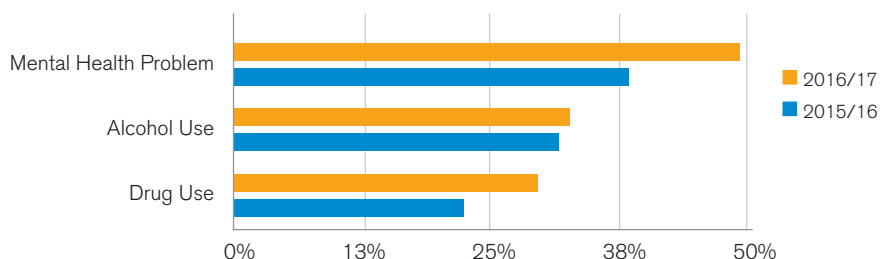
Duration of Guest Stay (days)



Proportion of Guests Reporting Relationship Breakdown



Reporting Substance Use or Mental Health Problems



CCNS Network Listing

Region	Borough/Town	Shelter/Project name	Website/Link
London:			
London	Bexley	Bexley Winter Night Shelter	https://www.cornestonebexley.org/
London	Barking and Dagenham	Hope4Barking & Dagenham	https://www.facebook.com/events/1639611989591574/
London	Barnet	Together In Barnet	http://www.togetherinbarnet.org/
London	Brent	Ashford Place	www.ashfordplace.org.uk
London	Bromley	5000 Project	http://www.bromleyurc.org.uk/outreach/5000-project.php
London	Camden	C4WS Homeless Project	http://www.c4wshomelessproject.org/
London	Camden	Simon Community Winter Shelter	https://www.simoncommunity.org.uk/Winter%20Shelter%20Update_79.html
London	Croydon	Croydon Churches Floating Shelter	http://www.croydonfloatingshelter.org/
London	Ealing	Ealing Churches Winter Night Shelter	http://www.ecwns.org.uk/home/
London	Ealing/Southall	Hope for Southall Street Homeless Project	www.hssh.org.uk
London	Enfield	All People All Places - Enfield	http://allpeopleallplaces.org/
London	Greenwich	Greenwich Winter Night Shelter	http://churchgreenwich.org.uk/page44.html
London	Hackney	Hackney Night Shelter	http://www.hwns.org.uk/
London	Hammersmith and Fulham	Glass Door (formerly WLCHC)	http://www.glassdoor.org.uk/welcome.htm
London	Haringey	All People All Places - APAP Haringey	http://allpeopleallplaces.org/index.php/about-the-shelter
London	Haringey	Highway of Holiness shelter	http://highwayofholiness.co.uk/highway-house/
London	Havering	Hope 4 Havering	http://www.hope4havering.co.uk/
London	Hillingdon	Trinity Homeless Projects.	http://wearetrinity.org.uk/homeless-now-get-some-support/
London	Hounslow	The Shelter Project Hounslow	http://www.tsph.org/
London	Islington	CARIS Islington Churches Cold Weather Shelter	http://www.carisisington.org/
London	Islington	Cally Crash Pad - Pillion Trust	http://www.pilliontrust.info/
London	Islington	Shelter From The Storm	http://sfts.org.uk/
London	Islington	OHA Christmas Shelter	https://www.oha.org.uk/
London	Kensington and Chelsea	Glass Door (formerly WLCHC)	https://www.glassdoor.org.uk/
London	Kingston upon Thames	Joel Community Trust	http://www.joelcommunitytrust.org.uk/
London	Kingston upon Thames	Kingston Churches Winter Night Shelter	http://www.kcch.org.uk/assets/documents/wns-2016-summary-report-jne-2
London	Lambeth/Southwark	Robes	http://www.robcs.org.uk/2009/
London	Lewisham	999 Club	http://www.999club.org/site/projects.php
London	Newham	NEWway Project	www.newwayproject.org
London	Merton	Merton Homeless Project	http://merton316.org/winter-night-shelter/
London	Redbridge	Redbridge Cold Weather Centre Ilford	http://www.salvationarmy.org.uk/cold-weather-centre
London	Richmond-Upon-Thames	Glass Door (formerly WLCHC)	https://www.glassdoor.org.uk/
London	Southwark/Lambeth	Robes	http://www.robcs.org.uk/2009/
London	Tower Hamlets	This is Growth	http://www.thisisgrowth.org/
London	Waltham Forest	Forest Churches Emergency Night Shelter (FCENS)	http://forestnightshelter.org.uk/
London	Wandsworth	Glass Door (formerly WLCHC)	http://www.glassdoor.org.uk/welcome.htm
London	Westminster	Westminster Churches/Synagogue Winter Shelters	http://www.wlm.org.uk/wldc
Home Counties:			
Berkshire	Bracknell	Pilgrim Hearts Trust	http://btm.website/mission-service/night-shelter/
Berkshire	Newbury	Newbury Night Shelter at Salvation Army Hall	https://www.newburytoday.co.uk/news/home/22144/bid-to-use-hall-as-newbury-homeless-shelter.html
Berkshire	Reading	FAITH Christian Group A Bed For The Night	www.abedforthenight.org.uk
Berkshire	Slough	Slough Winter Nightshelter	https://thelondonandsloughrun.com/2013/12/09/slough-winter-nightshelter-project/
Buckinghamshire	Wycombe	Wycombe Homeless Connection	http://www.wyhoc.org.uk/
Buckinghamshire	Milton Keynes	MK Night Shelter	http://www.winternightsheltermk.com/
Buckinghamshire	Aylesbury	Aylesbury Homeless Action Group	http://www.ahag.org.uk/
Hertfordshire	Bishops Stortford	Bishops Stortford Churches Winter Shelter	https://en-gb.facebook.com/BishopsStortfordWinterNightShelter/
Hertfordshire	Hatfield	Hatfield Night Shelter	http://www.hatfieldnightshelter.co.uk/
Hertfordshire	St Alban's	Open Door Winter Shelter	https://www.hightownha.org.uk/care-and-support/scheme-search/open-door-homelessness-service/
Essex	Southend on Sea	Southend Churches Winter Night Shelter	http://www.harpssouthend.org/#partners/c23xw/image_ay5
Essex	Basildon	Churches Together in Basildon	http://www.basildonchurches.org.uk/
East Sussex	St Leonards on Sea/Hastings	Snowflake Night Shelter	http://www.snowflake-nightshelter.org.uk/index.php
East Sussex	Eastbourne	Eastbourne Winter Night Shelter (Kingdom Way Trust)	http://kingdomwaytrust.org/winter-night-shelter/
West Sussex	Horsham	Horsham Churches Night Shelter	http://horsham-matters.org.uk/night-shelter/
West Sussex	Worthing	Worthing Winter Night Shelter	http://www.wchp.org.uk/worthing-winter-night-shelter/
West Sussex	Bognor Regis	Stone Pillow Night shelter(church supported)	http://stonepillow.org.uk/
Hampshire	Aldershot	The Vine Day Centre	http://www.thevinecentre.org.uk/
Hampshire	Basingstoke	The Dwelling Place	http://thedwellingplace.org.uk/
Kent	Gravesend	The Sanctuary Project	http://graveshamsanctuaryuk/
Kent	Maidstone	Salvation Army	http://www.maidstoneshelter.org.uk/
Kent	Tunbridge Wells	TW Churches Winter Shelter	www.tunbridgewellswinterstelter.co.uk

Region	Borough/Town	Shelter/Project name	Website/Link
Kent	Folkestone	Folkestone Churches Winter Shelter	www.wintershelter.org.uk
Kent	Medway Towns	Medway Churches Winter Shelter	http://www.medwayshelter.org/about.html
Kent	Thanet	Thanet Winter Shelter	http://www.churcharmy.org/Groups/233865/Church_Army/Church_Army/Our_work/Centres_of_Mission/England/Thanet.aspx
Kent	Ashford	Ashford Vineyard	http://ashfordvineyard.org/
Kent	Canterbury	Canterbury Community Shelter	www.catchinglives.org
Kent	Dartford	Dartford Churches Cold Weather Shelter	https://en-gb.facebook.com/Dartford-Churches-Cold-Weather-Shelter-690453827720700/
Kent	Dover	Dover Outreach	http://www.doveroutreachcentre.org.uk/winter-shelter/
Surrey	Redhill	Renewed Hope Trust Winter Shelter	www.rhtes.org
Midlands:			
Staffordshire	Stoke on Trent	Stoke Church & Community Night Shelter	https://www.facebook.com/SOTWinterNightShelter/
Staffordshire	Tamworth	The Starfish Winter Night Shelter	http://democracy.tamworth.gov.uk/documents/s21182/Appendix%201%20Starfish%20Report%200n%20Pilot%20Scheme.pdf
Warwickshire	Rugby	Rugby Winter Shelter Project	http://www.hope4.org.uk/
Warwickshire	Leamington	Leamington Night Shelter	http://www.leamingtontws.org/
West Midlands	Coventry	Coventry Winter Night Shelter	https://www.facebook.com/Coventry-Winter-Night-Shelter-287003528119521/
Leicestershire	Leicester	One Roof	http://www.oneroof.org.uk/
Suffolk	Ipswich	Ipswich Winter Night Shelter	http://www.iwns.org.uk/
Birmingham	Birmingham	Thrive Together Birmingham	http://www.bhamchurchesnightsshelter.org.uk/
Cambridgeshire	Peterborough	Light Project Winter Night Shelter	http://www.lightproject.org.uk/about-the-project/projects/
Nottinghamshire	Nottingham	Emmanuel House Winter Shelter	http://www.emmanuelhouse.org.uk/winter-shelter
Nottinghamshire	Mansfield	Mansfield Winter Night Shelter (SWEP & Weekends)	https://www.cuf.org.uk/mansfield-winter-shelter
Northamptonshire	Wellingborough		
North:			
Greater Manchester	Manchester	Together In Manchester Night Shelter	http://greatertogethermanchester.org/homelessness/
Greater Manchester	Manchester	Narrowgate Emergency Night Accommodation	http://citymission.org.uk/
Greater Manchester	Manchester	BOAZ Trust	www.boaztrust.org.uk
West Yorkshire	Bradford	Inn Churches Bradford	http://www.innchurches.co.uk/
West Yorkshire	Leeds	WYDAN Shelter Project	http://wydan.org.uk/
West Yorkshire	Huddersfield	ASSURE Huddersfield	https://huddersfield.cityofsanctuary.org/tag/huddersfield
West Yorkshire	Halifax	Calderdale Inn Churches	http://www.cffc.co.uk/inn-churches-homeless-shelter-calderdal/
West Yorkshire	Wakefield	Wakefield Baptist Church Night Shelter (SWEP)	www.wakefieldbaptistchurch.co.uk
Lancashire	Blackpool	Streetlife	http://www.wearestreetlife.org/
Cheshire	Warrington	Room at the Inn/YMCA	http://roomattheinn.org/
Cheshire	Crewe	LATH Group	http://creweymca.com/?p=1687#sthash.mZwFGiD9.dpbs
Cheshire	Macclesfield	Winter Hope Accommodation Macclesfield - WHAM	http://www.stoswaldbollington.org.uk/documents/WHAM.pdf
Cumbria	Kendal	Manna House Shelter	www.manna-house.org.uk
Lancashire	Lancaster	Christ Church Night Shelter	http://christchurchlancaster.org.uk/night-shelter/
Derbyshire	Chesterfield	Pathways of Chesterfield	http://www.pathwaysofchesterfield.co.uk/homeless-get-help-here/
South West:			
Hampshire	Winchester	Winchester Churches Nightshelter	www.wcns.org.uk
Bristol	Bristol	Bristol Churches Night Shelter - Crisis Centre Ministries	https://www.crisis-centre.org.uk/
Devon	Torbay	TOWNS (Torbay Winter Nightshelter)	www.paigntonbaptistchurch.org.uk
Devon	Paignton	TOWNS	www.paigntonbaptistchurch.org.uk
Wiltshire	Swindon	Swindon Night Shelter	www.swindonnightsshelter.org.uk
Wales:			
Wales	Newport	Eden Gate Newport Night Shelter	http://edengate.org.uk/newport-night-shelter/
Wales	Cardiff	Cardiff Night Shelter	https://www.rbc.ac/Groups/267099/Rhiwbina_Baptist_Church/Community/Homeless_Night_Shelter/Homeless_Night_Shelter.aspx
Wales	Swansea	Swansea Night Shelter	http://www.placeofvictory.org.uk/swansea-night-shelter/
Wales	Merthyr	Merthyr Night Shelter	http://hopemerthyr.org.uk/we-love-merthyr/
Wales	Caerphilly	Caerphilly Nightshelter	www.elimbaptistorg.uk
Others:			
Cambridgeshire	Cambridge	Jimmy's	www.jimmyscambridge.net
East Sussex	Brighton	The Brighton & Hove Churches Winter Night Shelter	http://www.stpetersbrighton.org/blog/winter-night-shelter
Bedfordshire	Dunstable/Luton	NOAH Enterprise	www.noahenterprise.org
Bedfordshire	Bedford	Kings Arms Project	www.kingsarmsproject.org
Oxfordshire	Oxford	Oxford Homeless Pathways	
Warwickshire	Nuneaton	Nuneaton Winter Night Shelter	
Lancashire	Blackpool	Homeless in Blackpool	http://www.homelessinblackpool.co.uk



Housing Justice

The Housing Justice Church
and Community Night Shelter Network

IMPACT REPORT 2017